

Strengthening Southeast Iowa  
in Des Moines, Henry, Lee and Louisa Counties since 1973

PAGE 1

## SEIRPC

### MISSION STATEMENT:

... To provide quality direct and technical services, to promote intergovernmental cooperation and to effect a strengthening of the governmental units of the region...

### FOLLOW US ON FACEBOOK!

[www.facebook.com/SEIRPC](http://www.facebook.com/SEIRPC)

### HISTORY:

SEIRPC was incorporated in 1973 by local governments in Southeast Iowa and is recognized in Chapter 28H of the Iowa Code.

### SERVICES:

- Transportation Planning
- Special Studies and Plans
- Land Use Planning
- Land Use Administration
- Project Management
- Community Development
- Ordinance Codification
- Grant writing & administration
- GIS Mapping and analysis
- Revolving loans for business
- Public transportation, van pools, employee transportation
- Housing development & rehabilitation
- Economic Development Services



## Funds Available for Businesses

Do you or does someone you know have a business or are interested in starting a business? SEIRPC, through its Revolving Loan Fund (RLF), have funds available at very low interest rates in partnership with local lenders.

Four separate loan pools are available. In addition, the City of Keokuk, the City of Fort Madison and Henry County have their own loan pools.

RLF funds can be used for essentially anything a business might need financing for: working capital, purchase of real estate, equipment, furniture and fixtures, etc. Depending on the number of jobs created or retained, the low-interest loans can lend up to \$20,000 per job (regional pool).

These funds are for “gap” financing and require the participation of a primary lender. SEIRPC will work with you and your primary lender to structure the loan.

For more information regarding the RLF programs, contact Assistant Director Jeff Hanan at 319-753-4316 or email [jhanan@seirpc.com](mailto:jhanan@seirpc.com). To download an application, visit the SEIRPC website [www.seirpc.com](http://www.seirpc.com) and hover over the “Work With Us” tab and click on “Forms and Applications.”

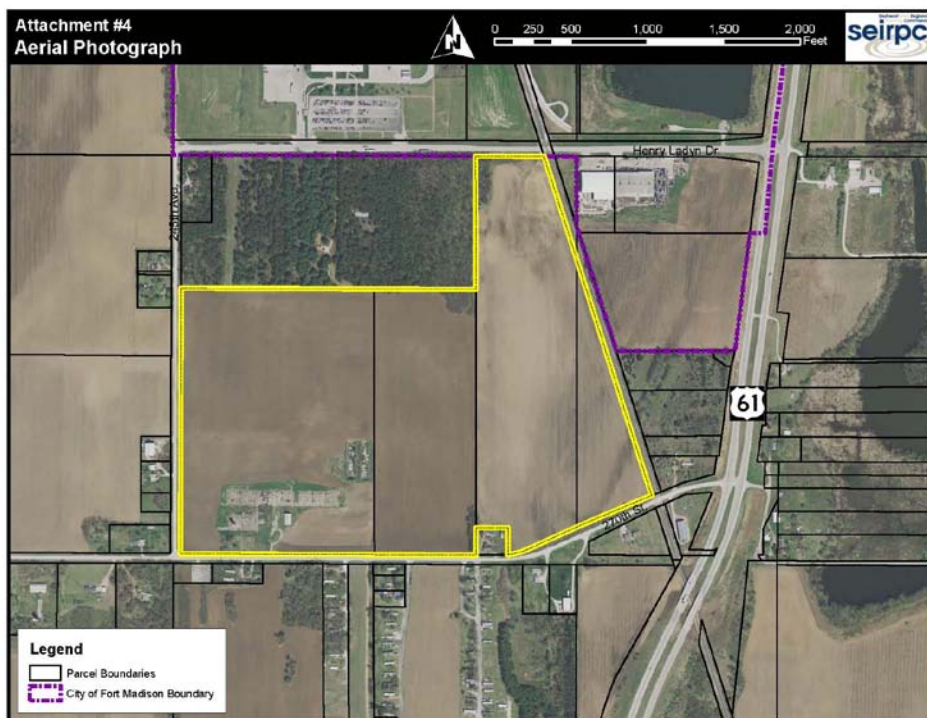
## SEIRPC to Assist Iowa Economic Development Authority with Mapping

In May of 2012, the Iowa Economic Development Authority (IEDA) kicked off its first round of the Iowa Certified Site Program. Intended to better position the State of Iowa to compete for large-scale capital investment projects, certified sites complete a rigorous process to ensure due diligence is completed and any potential issues are mitigated – essentially, the sites are shovel-ready.

SEIRPC has been active in the process, assisting multiple applicants in the region. Managing consultants used SEIRPC maps as the standard for all others in the program. This led to further discussions with IEDA on how to strengthen the site certification process and economic development in Iowa through better maps. SEIRPC by contract will work with IEDA on the following activities:

- Complete maps for Certified Site Applicant entering Step 3 of the program or that obtained site certification
- Complete maps for no more than two applicants entering the site certification process
- Create a guide to economic development mapping

Below is a sample map to SEIRPC standards. Contact Zach James with questions about mapping assistance or the Iowa Certified Site Program: [zjames@seirpc.com](mailto:zjames@seirpc.com), 319-753-4313.



## Community Transition Program Offers Assistance for Inmates Re-entering the Community

SEIRPC has been working with southeast Iowa counties since 2012 on a program to assist jail inmates with mental health care needs. Beginning with Des Moines and Lee counties in 2014, **Kirstin Kramer, MA**, was hired by SEIRPC as the Community Transition Coordinator. Kirstin has developed the program which includes in-jail services, as well as transitional planning to assist the inmate re-entry into the community with the services and tools to prevent recidivism.

The SEIRPC region is part of the larger Southeast Iowa Link (SEIL) community and mental health service delivery region, which now contracts with SEIRPC to provide community transition services. Recently SEIL voted to expand the program and hire a second staff, a Community Transition Technician. In December, 2015, Elley Neuzil, BA, was hired by SEIRPC to fulfill the new position. The staff addition has allowed the program to expand from Des Moines and Lee counties into Henry, Louisa and Washington counties. Moving forward this program will be known as Transition Link.

The addition of the Community Transition Technician, who will be responsible for inmate assessment and data entry, will allow more time for the CTC to create, implement and track outcomes more accurately for a more thorough program evaluation. An evidence based screener is being implemented into the booking process at all 5 jail locations to more accurately capture the group who presents with serious mental health needs.

Through Transition Link assistance, inmates have the option to participate in several programs designed to assist them with issues that may be successful re-entry into the community, including: 3:12 Faith-based Ministry, REVAMP, IowaWORKS, IHH Integrated Health Home, and ADDS Gambling Addiction Counseling. These are all provided programming in Lee and Des Moines County Jails. The Lee County Jail also has an inmate implemented Narcotics Anonymous group that meets weekly. These programs are in addition to the one-on-one transitional services provided to inmates with mental health issues.

It is clear from communication with county jails, inmates and the mental health region the program bringing needed resources residents and county jails. What can't be measured by raw data however, is the capacity building and outreach the program has accomplished since its inception. The increase in communication between the jail and service providers and the court system has resulted in the successful transition of inmates into the community.

## SEIBUS STAFF PROFILE

Carolyn Lees is the SEIBUS scheduler and dispatcher. Carolyn has been employed with SEIRPC since September 2006. She resides in West Burlington, where she has lived most of her life. Carolyn has two children and two grandchildren. Before taking on the position of scheduler, Carolyn was employed as an airline reservationist, piano tuner and elementary library aide. In her spare time, Carolyn enjoys reading, hand bell choir and playing with her grandchildren. Her favorite television channel is HGTV and she loves to watch Iowa Hawkeye basketball.

**Where is the most interesting place you have visited?**

*"I have visited both London and Hawaii."*

**People would be surprised to know....**

*"I am in the hand bell choir at 1<sup>st</sup> United Methodist Church -**Inspirational Ringers.**"*

**What's your favorite line from a movie/television show?**

*"SQUIRREL!" (Movie—UP)*

**If you could have any job, what would it be?**

*"I would like to be a tour director on a tour bus."*

**What is your favorite thing about working at SEIBUS?**

*"I enjoy helping people that appreciate it."*



SOURCE/PROGRAM	USES	ELIGIBLE APPLICANTS	DUE DATE
CDBG Funds, IEDA	Downtown Revitalization/Façade program	Local Governments/non profits	1/1/2016
Water Recreation Access Grant, IDNR	IDNR funding for docks, boat ramps, shoreline projects, etc.	Local governments	1/1/2016
Iowa Great Places, IEDA	Funding for cultural initiatives and major projects that make an area unique.	Local governments	1/1/2016
Alliant Energy Foundation	Community Enhancement Projects.	Local governments, non-profits	1/1/2016
Derelict Buildings Program, IDNR	For cities under 5,000. Provides assistance for cleanup and reuse of derelict buildings. Contact SEIRPC for more information.	Local governments	2/1/2016
Historic Resource Development Program, HIS	Funding for historic preservation projects.	Local governments, non-profits	4/1/2016
Iowa Arts Council Project Grants, IAC	Funds public arts projects and programs	Artists, local governments, schools, non-profits	5/1/2016
Affordable Housing Program, FHLB	(FHLB) of Des Moines that funds rental and homeownership projects.	profits with a partnership through local banks.	5/1/2016
Wildlife Habitat Promotion with Local Entities Program, IDNR	Cost share funding for wildlife projects, including land acquisition, forestry work, fencing, etc.	County conservation boards	5/1/2016
Matching Assets to Community Health, Wellmark	Supports projects at a \$1:1 ratio which promote active living in built environments, increase access to and consumption of nutritious foods.	501c3 organizations	5/15/2016
REAP Roadside Vegetation	Research and demonstration projects, education programs and materials, roadside inventories, purchase of special equipment to implement roadside vegetation management.	Local governments, non-profits, individuals, private entities	6/1/2016
Community Attraction and Tourism, IEDA	Tourism, recreation, entertainment capital projects	Local governments, non-profits	7/1/2016
State Rec Trail Grant, IDOT	Grants for recreational trails	Local governments	7/1/2016
Resource Enhancement and Protection (REAP), IDNR	Recreational and conservation projects, including: land and easement acquisition, park development and multipurpose recreational projects.	Local governments	8/1/2016
CDBG Funds, IEDA	Water/Sewer applications	Local Governments	11/15/2016
CDBG Funds, IEDA	Community Facility applications	Local Governments/non profits/daycares/senior living	12/1/2016
Solid Waste Management Grant, IDNR	Funds to help with various solid waste projects including studies and implementation.	Local governments	12/1/2016
Solid Waste Alternatives Program, IDNR	Programs to encourage landfill alternatives - recycling, diversion, etc.	Local governments	12/1/2016



## Available Funding Sources (cont'd)

SOURCE/PROGRAM	USES	ELIGIBLE APPLICANTS	DUE DATE
Regional Surface Transportation Program (STP)	Applications are submitted to SEIRPC for primarily road projects. Competitive awards are made to cities and counties separately. Contact SEIRPC for additional information.	Local governments	12/31/2015
Regional Transportation Alternatives (TAP) Program	Applications are submitted to SEIRPC for alternative transportation projects like trails, and trail bridges, roadway beautification and other uses. Contact SEIRPC for more information.	Local governments	12/31/2015
CDBG Sustainable Community Demonstration	Innovative and creative projects to support community sustainability. Projects might include green energy and streetscape or stormwater projects.	Local governments	12/31/2015
CDBG Funds, IEDA	Housing Applications	Local Governments	1/15/2016
State Revolving Fund (IFA)	Assist in financing design and construction of wastewater facilities, clean water infrastructure, drinking water infrastructure, soil and erosion control and storm water projects.	Local Governments	Ongoing
CDBG Economic Development Set Aside, IEDA	Grants and loans to businesses expanding or starting up. Contingent on businesses giving hiring preference or effort to LMI individuals.	Local Governments	Ongoing
Brownfields Tax Credits, IEDA	Assist in redevelopment of brownfield or grayfield sites, including vacant, industrial, commercial or downtown properties.	Local governments, non-profits, private business	Ongoing
Revitalize Iowa's Sound Economy, IDOT	Funding to provide transportation access to businesses expanding, starting or relocating from out of state. Local development 50% (Feb 1 and Sept 1) Immediate Opportunity 80% cost share.	Local governments	Ongoing
Traffic Engineering Assistance Program (TEAP), Iowa DOT	Provides 100 hours of engineering assistance for operations and traffic safety issues.	Local governments	Ongoing
Highway Safety Improvement Program (HSIP), Iowa DOT	Provides grants for low-cost, systemic safety improvements in the \$10,000/mile range, focusing on lane departure crashes.	County governments	Ongoing
CDBG Public Facilities Set Aside, IEDA	Grants and loans to local governments for infrastructure supporting job creation for low to moderate income workers	Local Governments	Ongoing

## SEIRPC Office Staff Listing (with years of tenure)

**SUSAN COFFEY**, GRANT ADMINISTRATOR: [scoffey@seirpc.com](mailto:scoffey@seirpc.com) (22 yrs)

**DAN EBERHARDT**, REGIONAL PLANNER II: [deberhardt@seirpc.com](mailto:deberhardt@seirpc.com) (16 yrs)

**MIKE NORRIS**, EXECUTIVE DIRECTOR: [mnorris@seirpc.com](mailto:mnorris@seirpc.com), (12yrs)

**ZACH JAMES**, PLANNING DIRECTOR: [zjames@seirpc.com](mailto:zjames@seirpc.com) (10 yrs)

**JEFF HANAN**, ASSISTANT DIRECTOR: [jhanan@seirpc.com](mailto:jhanan@seirpc.com) (10 yrs)

**SARA HECOX**, GRANT ADMINISTRATOR: [shecox@seirpc.com](mailto:shecox@seirpc.com) (10 yrs)

**CAROLYN LEES**, TRANSIT SCHEDULER: [cless@seirpc.com](mailto:cless@seirpc.com) (9 yrs)

**TRACEY LAMM**, REGIONAL DEV. COORDINATOR: [tlamm@seirpc.com](mailto:tlamm@seirpc.com) (8 yrs)

**CHRIS RALPH**, HOUSING INSPECTOR: [cralph@seirpc.com](mailto:cralph@seirpc.com) (8 yrs)

**DEBBIE LAUGHLIN**, EXECUTIVE ASSISTANT: [dlaughlin@seirpc.com](mailto:dlaughlin@seirpc.com) (7 yrs)

**SHERRI JONES**, PLANNING ASSISTANT: [sjones@seirpc.com](mailto:sjones@seirpc.com) (7 yrs)

**GERALD HEUBNER**, TRANSIT MAINTENANCE MGR: [gheubner@seirpc.com](mailto:gheubner@seirpc.com) (7 yrs)

**LORI GILPIN**, FINANCE DIRECTOR: [lgilpin@seirpc.com](mailto:lgilpin@seirpc.com) (3 yrs)

**STACEY FINCHER**, RECEPTIONIST: [sfincher@seirpc.com](mailto:sfincher@seirpc.com) (2 yrs)

**JARRED LASSITER**, REGIONAL PLANNER: [jlassiter@seirpc.com](mailto:jlassiter@seirpc.com) (1 yrs)

**EMERY ELLINGSON**, REGIONAL PLANNER: [eellingson@seirpc.com](mailto:eellingson@seirpc.com) (<1 yrs)

**NICOLE BAKER**, TRANSIT DIRECTOR: [nbaker@seirpc.com](mailto:nbaker@seirpc.com) (<1 yrs)